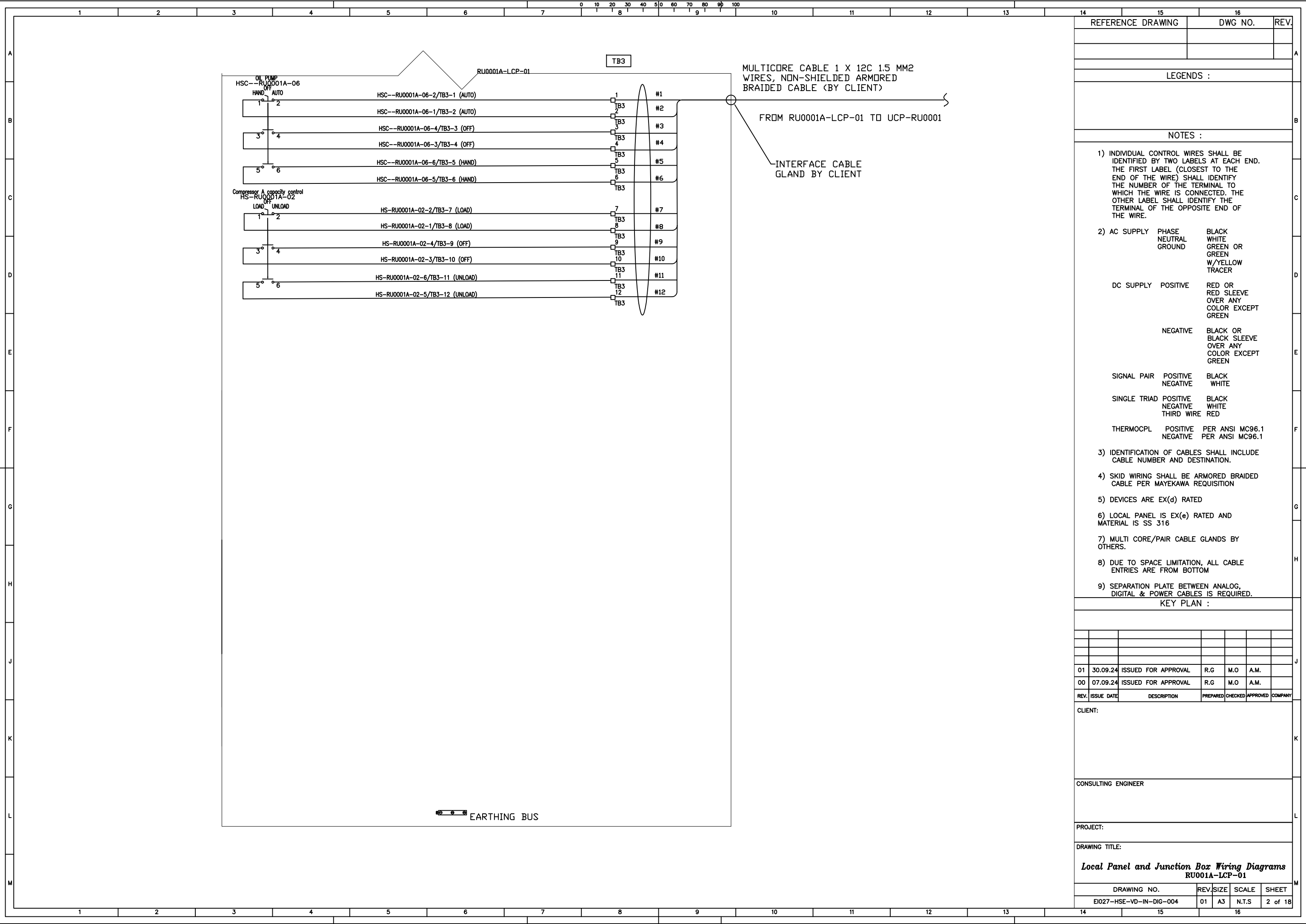
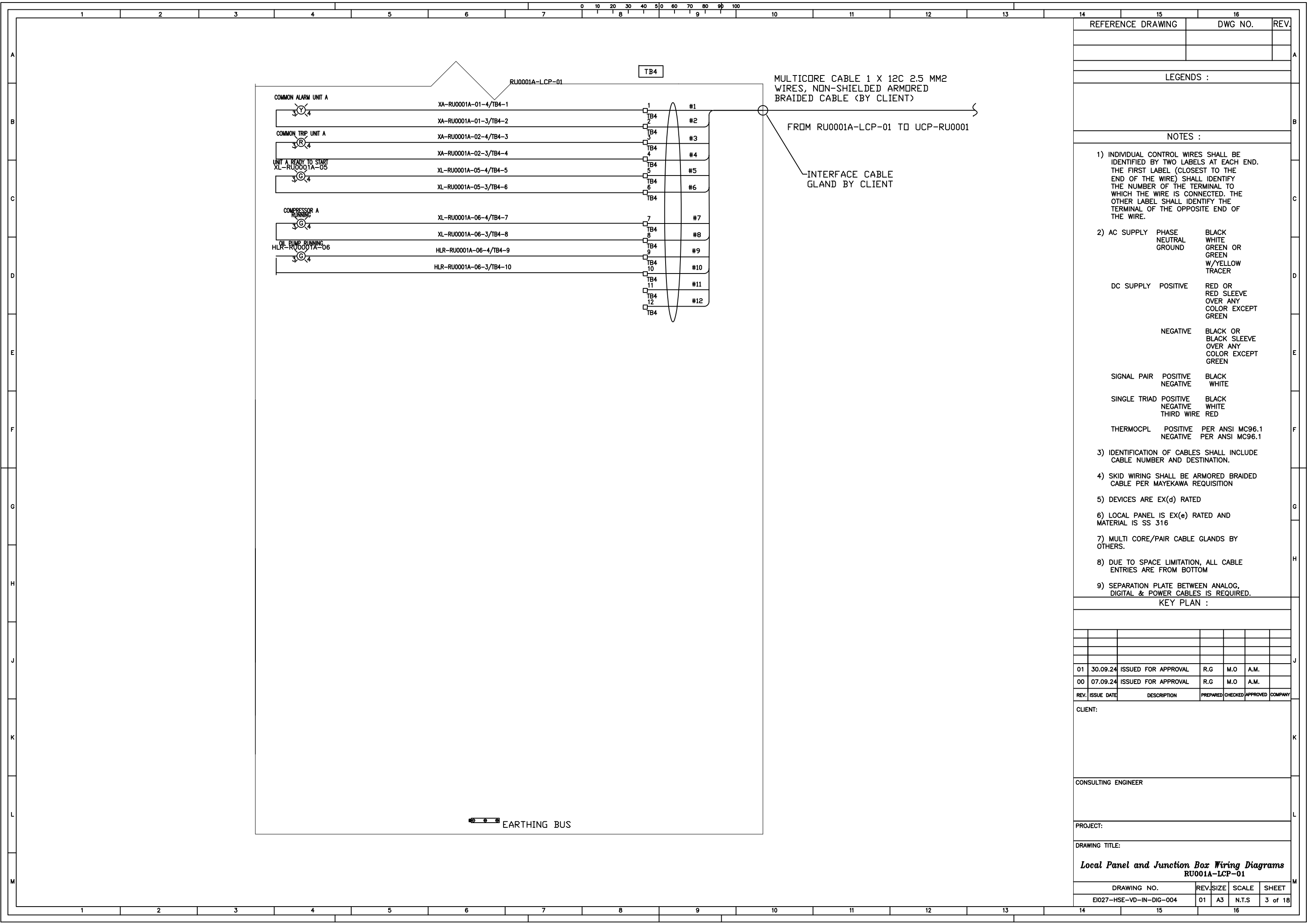
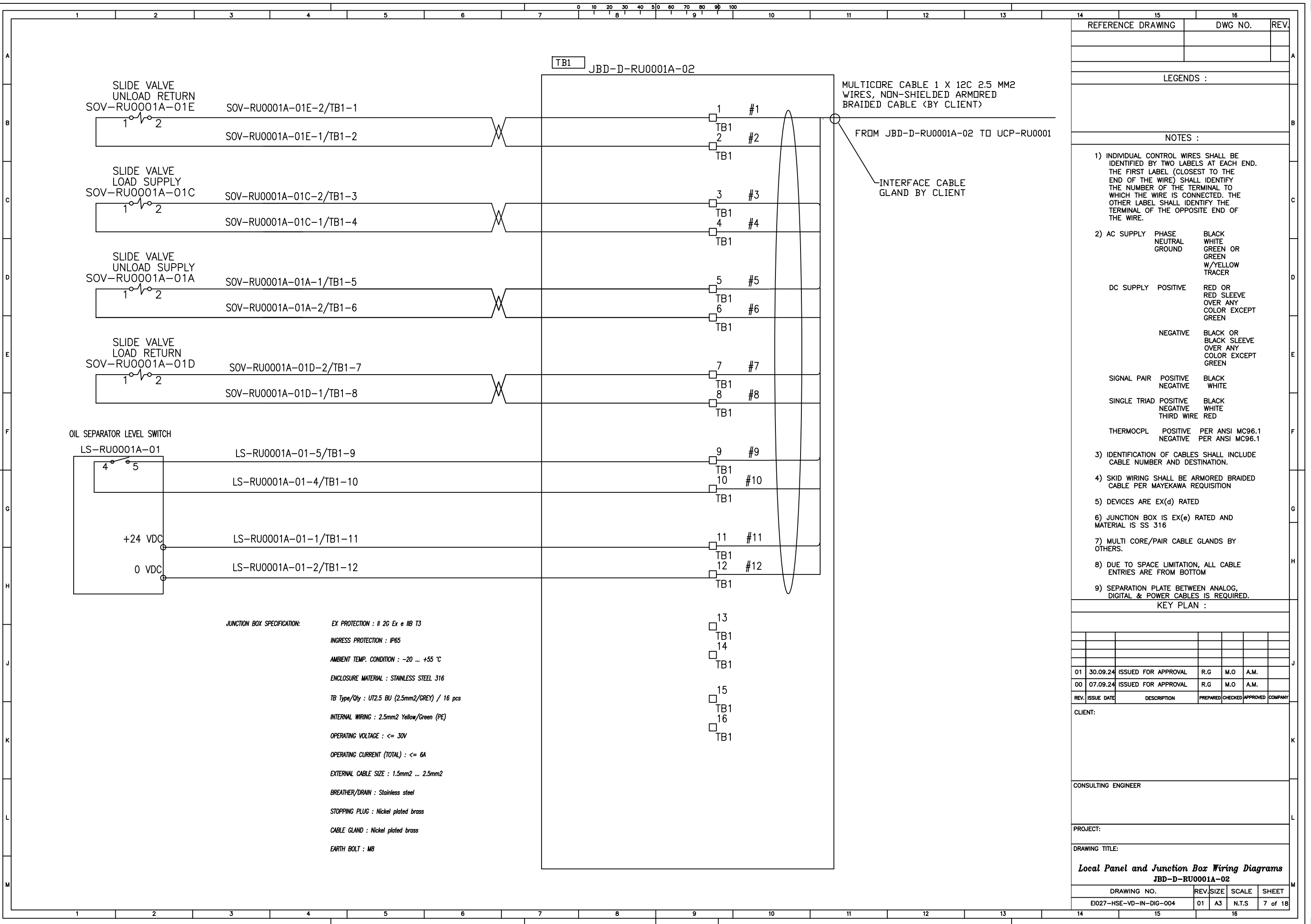


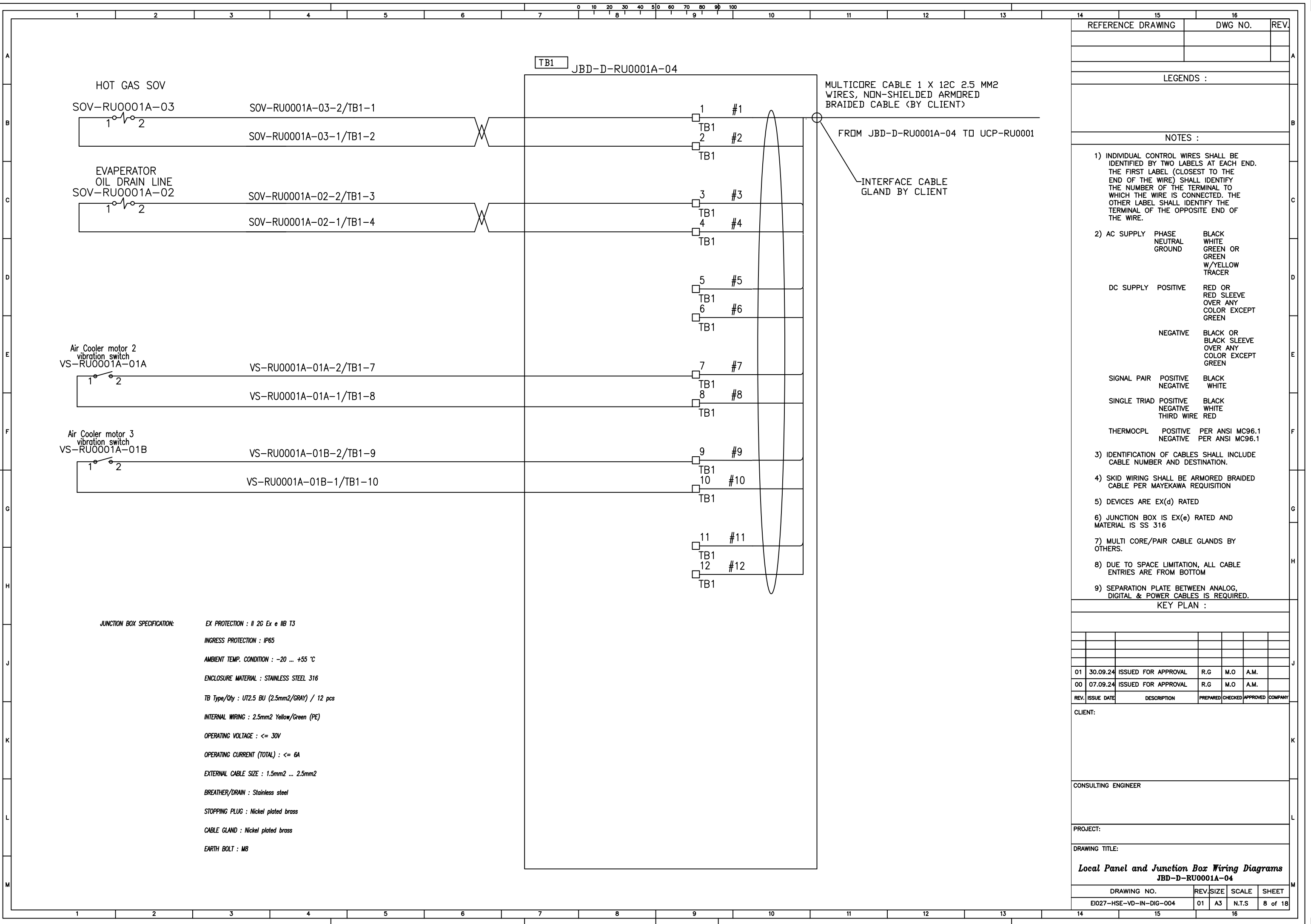
REFERENCE DRAWING			DWG NO.		REV.		
LEGENDS :							
NOTES :							
1) INDIVIDUAL CONTROL WIRES SHALL BE IDENTIFIED BY TWO LABELS AT EACH END. THE FIRST LABEL (CLOSEST TO THE END OF THE WIRE) SHALL IDENTIFY THE NUMBER OF THE TERMINAL TO WHICH THE WIRE IS CONNECTED. THE OTHER LABEL SHALL IDENTIFY THE TERMINAL OF THE OPPOSITE END OF THE WIRE.							
2) AC SUPPLY PHASE BLACK NEUTRAL WHITE GROUND GREEN OR GREEN W/YELLOW TRACER							
DC SUPPLY POSITIVE RED OR RED SLEEVE OVER ANY COLOR EXCEPT GREEN							
NEGATIVE BLACK OR BLACK SLEEVE OVER ANY COLOR EXCEPT GREEN							
SIGNAL PAIR POSITIVE BLACK NEGATIVE WHITE							
SINGLE TRIAD POSITIVE BLACK NEGATIVE WHITE THIRD WIRE RED							
THERMOCPL POSITIVE PER ANSI MC96.1 NEGATIVE PER ANSI MC96.1							
3) IDENTIFICATION OF CABLES SHALL INCLUDE CABLE NUMBER AND DESTINATION.							
4) SKID WIRING SHALL BE ARMORED BRAIDED CABLE PER MAYEKAWA REQUISITION							
5) DEVICES ARE EX(d) RATED							
6) LOCAL PANEL IS EX(e) RATED AND MATERIAL IS SS 316							
7) MULTI CORE/PAIR CABLE GLANDS BY OTHERS.							
8) DUE TO SPACE LIMITATION, ALL CABLE ENTRIES ARE FROM BOTTOM							
9) SEPARATION PLATE BETWEEN ANALOG, DIGITAL & POWER CABLES IS REQUIRED.							
KEY PLAN :							
01	30.09.24	ISSUED FOR APPROVAL	R.G	M.O	A.M.		
00	07.09.24	ISSUED FOR APPROVAL	R.G	M.O	A.M.		
REV.	ISSUE DATE	DESCRIPTION	PREPARED	CHECKED	APPROVED COMPANY		
CLIENT:							
CONSULTING ENGINEER							
PROJECT:							
DRAWING TITLE:							
Local Panel and Junction Box Wiring Diagrams RU001A-LCP-01							
DRAWING NO.			REV.	SIZE	SCALE		
EI027-HSE-VD-IN-DIG-004			01	A3	N.T.S		
					SHEET		
					1 of 18		

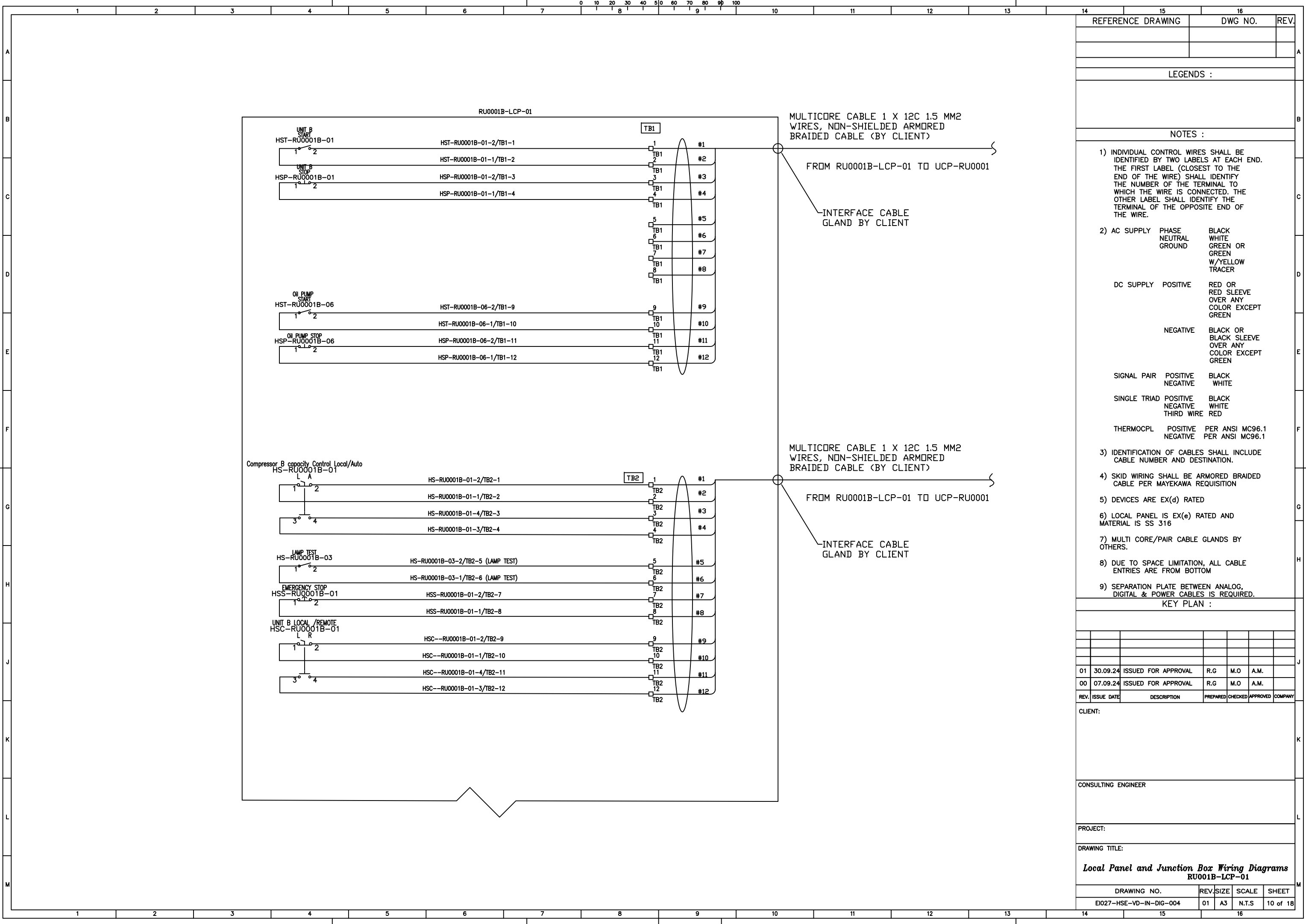


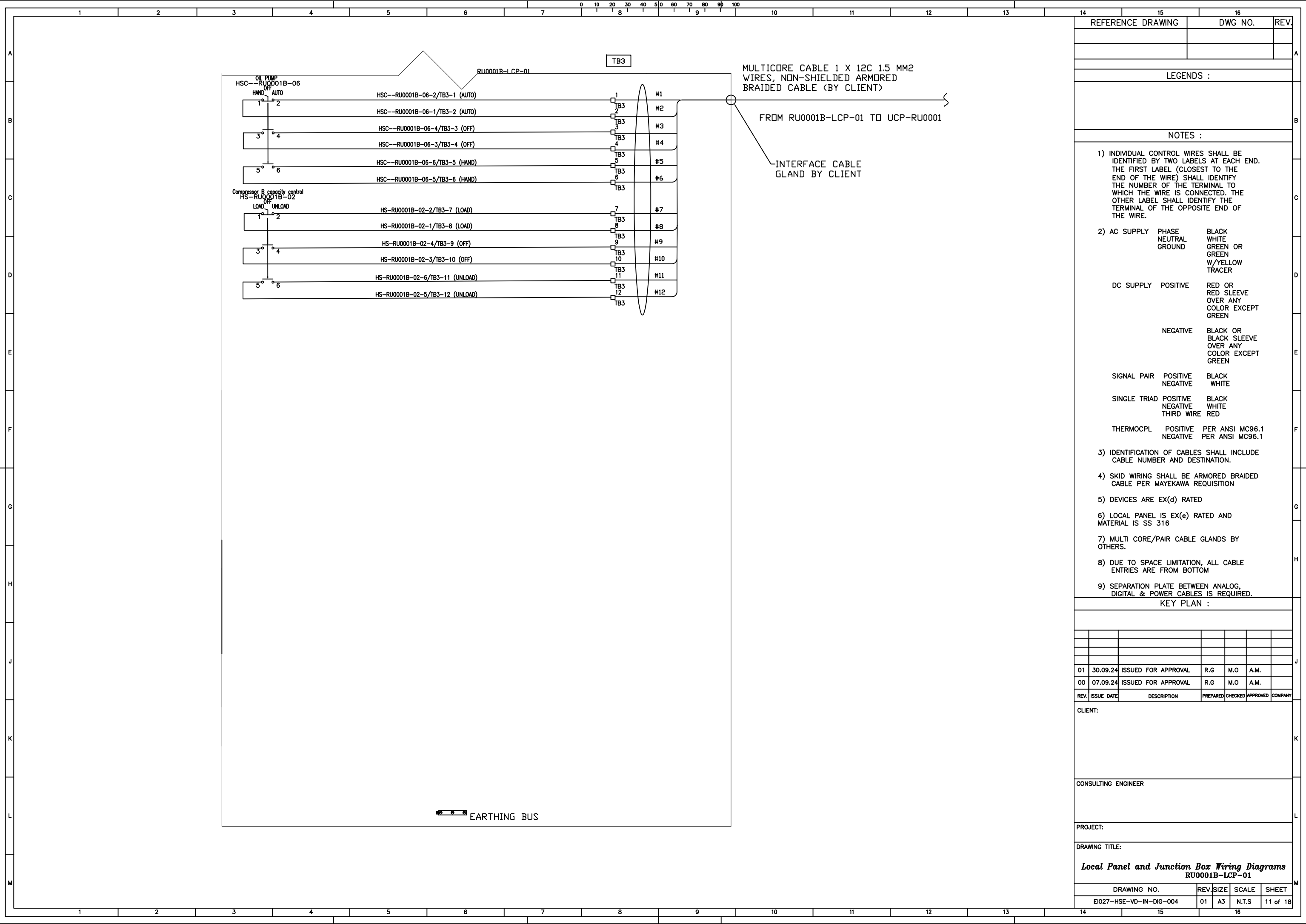


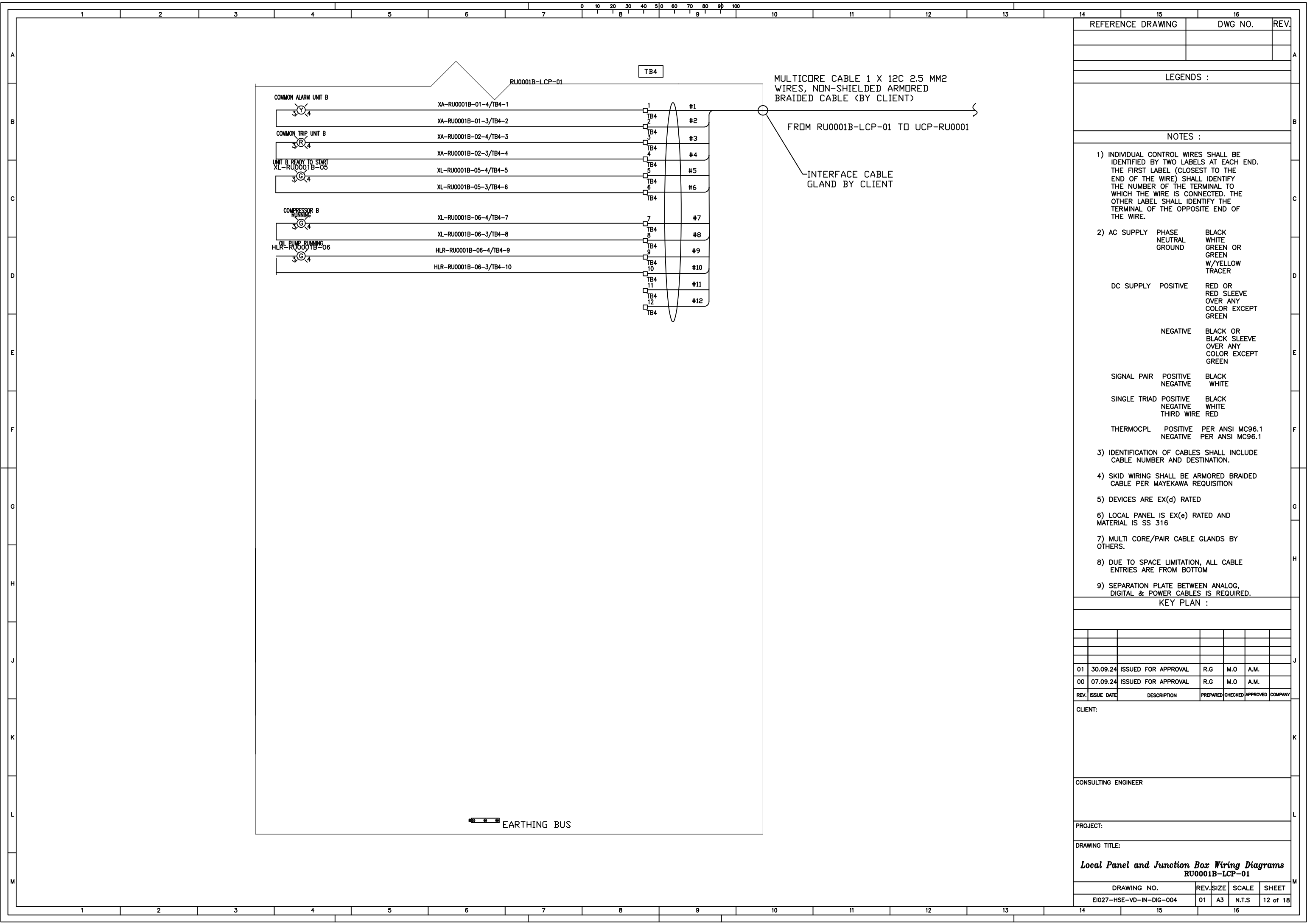
REFERENCE DRAWING			DWG NO.		REV.
LEGENDS :					
NOTES :					
1) INDIVIDUAL CONTROL WIRES SHALL BE IDENTIFIED BY TWO LABELS AT EACH END. THE FIRST LABEL (CLOSEST TO THE END OF THE WIRE) SHALL IDENTIFY THE NUMBER OF THE TERMINAL TO WHICH THE WIRE IS CONNECTED. THE OTHER LABEL SHALL IDENTIFY THE TERMINAL OF THE OPPOSITE END OF THE WIRE.					
2) AC SUPPLY		PHASE NEUTRAL GROUND	BLACK WHITE GREEN OR GREEN W/YELLOW TRACER		
DC SUPPLY		POSITIVE	RED OR RED SLEEVE OVER ANY COLOR EXCEPT GREEN		
		NEGATIVE	BLACK OR BLACK SLEEVE OVER ANY COLOR EXCEPT GREEN		
SIGNAL PAIR		POSITIVE NEGATIVE	BLACK WHITE		
SINGLE TRIAD		POSITIVE NEGATIVE THIRD WIRE	BLACK WHITE RED		
THERMOCPL		POSITIVE NEGATIVE	PER ANSI MC96.1 PER ANSI MC96.1		
3) IDENTIFICATION OF CABLES SHALL INCLUDE CABLE NUMBER AND DESTINATION.					
4) SKID WIRING SHALL BE ARMORED BRAIDED CABLE PER MAYEKAWA REQUISITION					
5) DEVICES ARE EX(d) RATED					
6) LOCAL PANEL IS EX(e) RATED AND MATERIAL IS SS 316					
7) MULTI CORE/PAIR CABLE GLANDS BY OTHERS.					
8) DUE TO SPACE LIMITATION, ALL CABLE ENTRIES ARE FROM BOTTOM					
9) SEPARATION PLATE BETWEEN ANALOG, DIGITAL & POWER CABLES IS REQUIRED.					
KEY PLAN :					
01	30.09.24	ISSUED FOR APPROVAL	R.G	M.O	A.M.
00	07.09.24	ISSUED FOR APPROVAL	R.G	M.O	A.M.
REV.	ISSUE DATE	DESCRIPTION	PREPARED	CHECKED	APPROVED COMPANY
CLIENT:					
CONSULTING ENGINEER					
PROJECT:					
DRAWING TITLE:					
Local Panel and Junction Box Wiring Diagrams RU001A-LCP-01					
DRAWING NO.			REV.	SIZE	SCALE
EI027-HSE-VD-IN-DIG-004			01	A3	N.T.S
					SHEET
					3 of 18



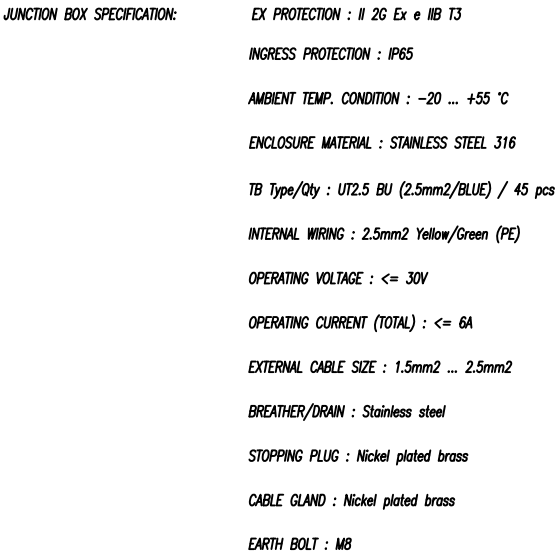




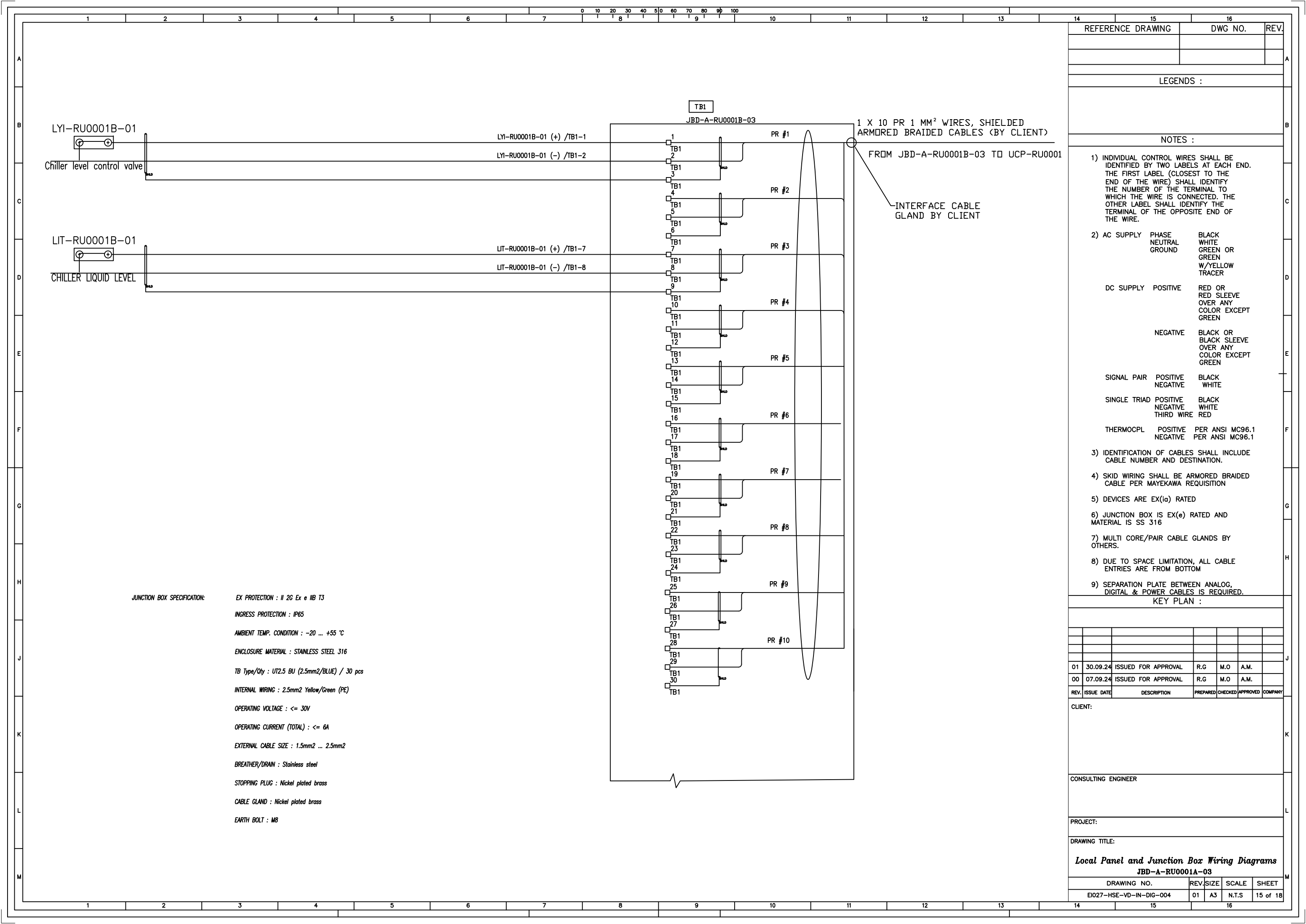




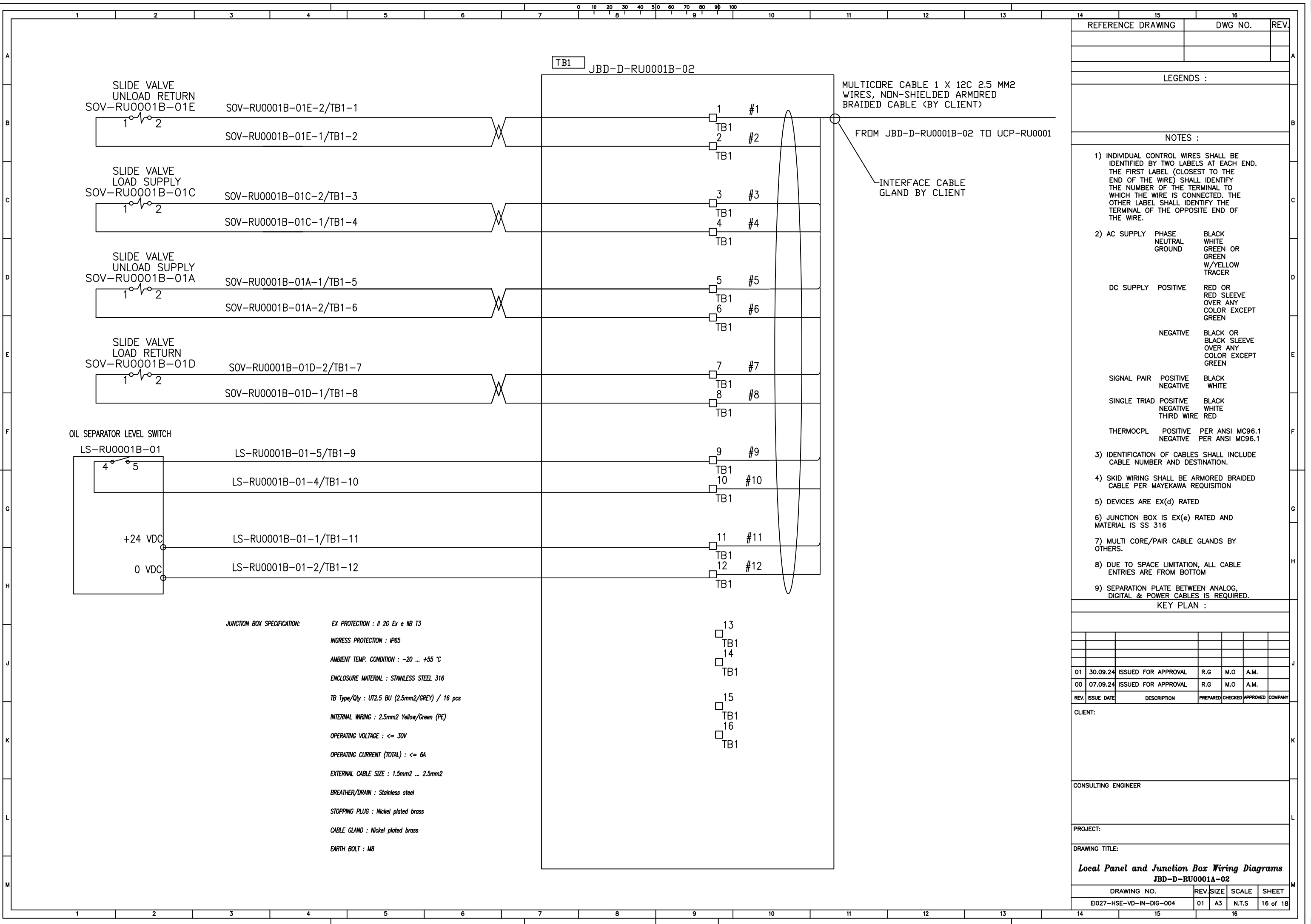
REFERENCE DRAWING			DWG NO.		REV.
LEGENDS :					
NOTES :					
1) INDIVIDUAL CONTROL WIRES SHALL BE IDENTIFIED BY TWO LABELS AT EACH END. THE FIRST LABEL (CLOSEST TO THE END OF THE WIRE) SHALL IDENTIFY THE NUMBER OF THE TERMINAL TO WHICH THE WIRE IS CONNECTED. THE OTHER LABEL SHALL IDENTIFY THE TERMINAL OF THE OPPOSITE END OF THE WIRE.					
2) AC SUPPLY		PHASE NEUTRAL GROUND	BLACK WHITE GREEN OR GREEN W/YELLOW TRACER		
DC SUPPLY		POSITIVE	RED OR RED SLEEVE OVER ANY COLOR EXCEPT GREEN		
		NEGATIVE	BLACK OR BLACK SLEEVE OVER ANY COLOR EXCEPT GREEN		
SIGNAL PAIR		POSITIVE NEGATIVE	BLACK WHITE		
SINGLE TRIAD		POSITIVE NEGATIVE THIRD WIRE	BLACK WHITE RED		
THERMOCPL		POSITIVE NEGATIVE	PER ANSI MC96.1 PER ANSI MC96.1		
3) IDENTIFICATION OF CABLES SHALL INCLUDE CABLE NUMBER AND DESTINATION.					
4) SKID WIRING SHALL BE ARMORED BRAIDED CABLE PER MAYEKAWA REQUISITION					
5) DEVICES ARE EX(d) RATED					
6) LOCAL PANEL IS EX(e) RATED AND MATERIAL IS SS 316					
7) MULTI CORE/PAIR CABLE GLANDS BY OTHERS.					
8) DUE TO SPACE LIMITATION, ALL CABLE ENTRIES ARE FROM BOTTOM					
9) SEPARATION PLATE BETWEEN ANALOG, DIGITAL & POWER CABLES IS REQUIRED.					
KEY PLAN :					
01	30.09.24	ISSUED FOR APPROVAL	R.G	M.O	A.M.
00	07.09.24	ISSUED FOR APPROVAL	R.G	M.O	A.M.
REV.	ISSUE DATE	DESCRIPTION	PREPARED	CHECKED	APPROVED COMPANY
CLIENT:					
CONSULTING ENGINEER					
PROJECT:					
DRAWING TITLE:					
Local Panel and Junction Box Wiring Diagrams RU0001B-LCP-01					
DRAWING NO.			REV.	SIZE	SCALE SHEET
EI027-HSE-VD-IN-DIG-004			01	A3	N.T.S 12 of 18

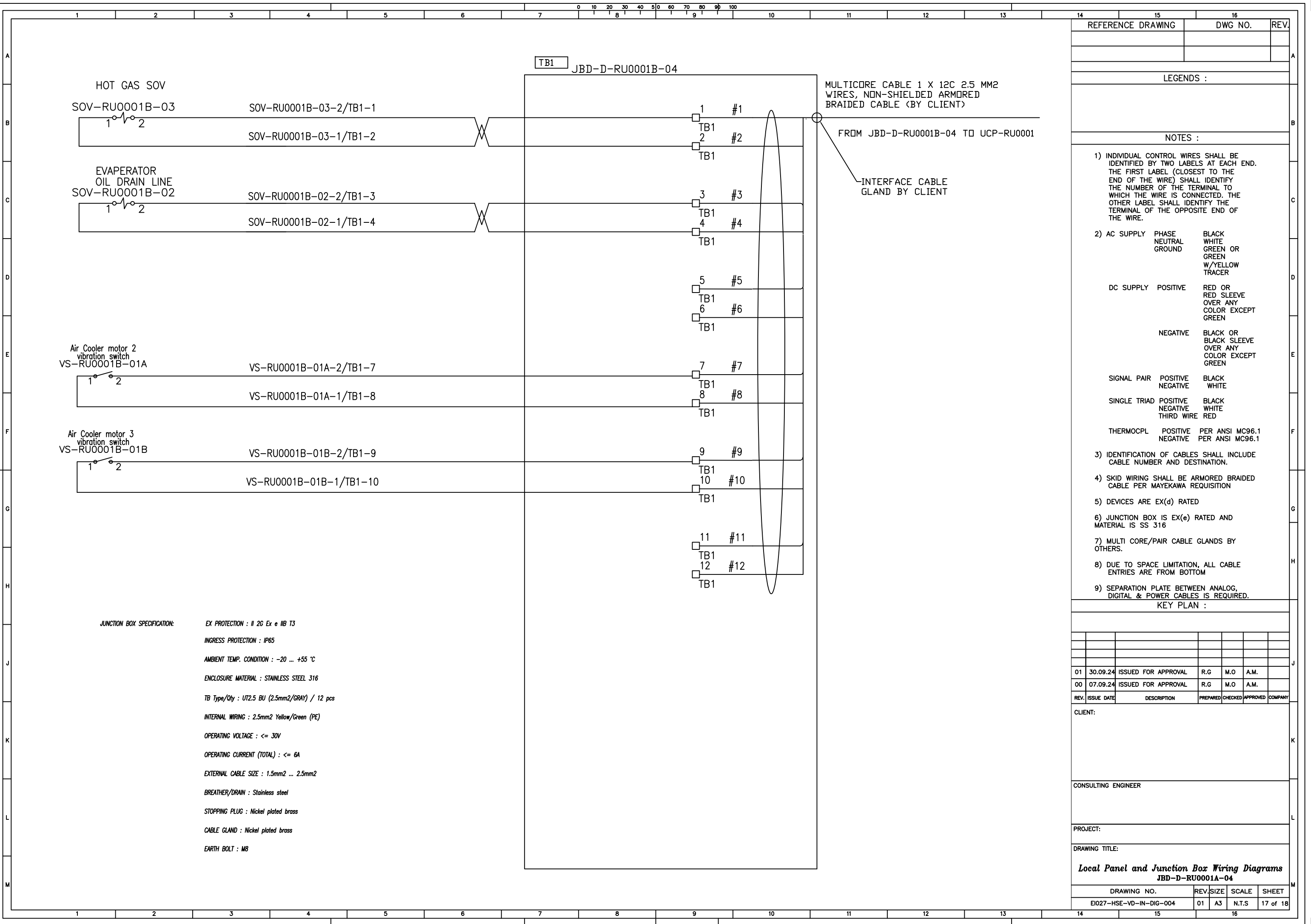


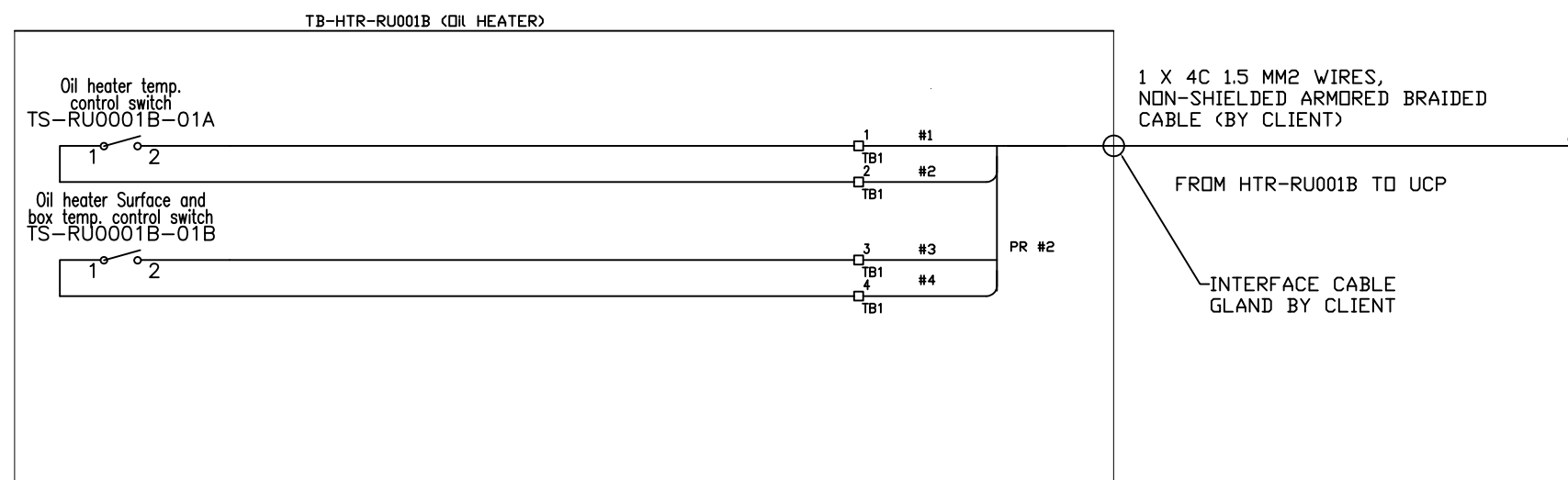
14	15	16
REFERENCE DRAWING	DWG NO.	REV.
LEGENDS :		
NOTES :		
<p>1) INDIVIDUAL CONTROL WIRES SHALL BE IDENTIFIED BY TWO LABELS AT EACH END. THE FIRST LABEL (CLOSEST TO THE END OF THE WIRE) SHALL IDENTIFY THE NUMBER OF THE TERMINAL TO WHICH THE WIRE IS CONNECTED. THE OTHER LABEL SHALL IDENTIFY THE TERMINAL OF THE OPPOSITE END OF THE WIRE.</p> <p>2) AC SUPPLY PHASE NEUTRAL GROUND BLACK WHITE GREEN OR GREEN W/YELLOW TRACER</p> <p>DC SUPPLY POSITIVE RED OR RED SLEEVE OVER ANY COLOR EXCEPT GREEN</p> <p>Negative BLACK OR BLACK SLEEVE OVER ANY COLOR EXCEPT GREEN</p> <p>SIGNAL PAIR POSITIVE BLACK WHITE Negative</p> <p>SINGLE TRIAD POSITIVE BLACK WHITE Negative THIRD WIRE RED</p> <p>THERMOCP L POSITIVE PER ANSI MC96.1 Negative PER ANSI MC96.1</p> <p>3) IDENTIFICATION OF CABLES SHALL INCLUDE CABLE NUMBER AND DESTINATION.</p> <p>4) SKID WIRING SHALL BE ARMORED BRAIDED CABLE PER MAYEKAWA REQUISITION</p> <p>5) DEVICES ARE EX(ia) RATED</p> <p>6) JUNCTION BOX IS EX(e) RATED AND MATERIAL IS SS 316</p> <p>7) MULTI CORE/PAIR CABLE GLANDS BY OTHERS.</p> <p>8) DUE TO SPACE LIMITATION, ALL CABLE ENTRIES ARE FROM BOTTOM</p> <p>9) SEPARATION PLATE BETWEEN ANALOG, DIGITAL & POWER CABLES IS REQUIRED.</p>		
KEY PLAN :		
01	30.09.24	ISSUED FOR APPROVAL R.G M.O A.M.
00	07.09.24	ISSUED FOR APPROVAL R.G M.O A.M.
REV. ISSUE DATE	DESCRIPTION	PREPARED CHECKED APPROVED COMPANY
CLIENT:		
CONSULTING ENGINEER		
PROJECT:		
DRAWING TITLE:		
Local Panel and Junction Box Wiring Diagrams		
JBD-A-RU0001A-01		
DRAWING NO.	REV.	SIZE SCALE SHEET
EI027-HSE-VD-IN-DIG-004	01	A3 N.T.S 13 of 18
14	15	16



REFERENCE DRAWING				DWG NO.		REV.
LEGENDS :						
NOTES :						
1) INDIVIDUAL CONTROL WIRES SHALL BE IDENTIFIED BY TWO LABELS AT EACH END. THE FIRST LABEL (CLOSEST TO THE END OF THE WIRE) SHALL IDENTIFY THE NUMBER OF THE TERMINAL TO WHICH THE WIRE IS CONNECTED. THE OTHER LABEL SHALL IDENTIFY THE TERMINAL OF THE OPPOSITE END OF THE WIRE.						
2) AC SUPPLY		PHASE	BLACK			
		NEUTRAL	WHITE			
		GROUND	GREEN OR GREEN			
			W/YELLOW			
			TRACER			
DC SUPPLY		POSITIVE	RED OR RED SLEEVE			
			OVER ANY COLOR EXCEPT GREEN			
		NEGATIVE	BLACK OR BLACK SLEEVE			
			OVER ANY COLOR EXCEPT GREEN			
SIGNAL PAIR		POSITIVE	BLACK			
		NEGATIVE	WHITE			
SINGLE TRIAD		POSITIVE	BLACK			
		NEGATIVE	WHITE			
		THIRD WIRE	RED			
THERMOCPL		POSITIVE	PER ANSI MC96.1			
		NEGATIVE	PER ANSI MC96.1			
3) IDENTIFICATION OF CABLES SHALL INCLUDE CABLE NUMBER AND DESTINATION.						
4) SKID WIRING SHALL BE ARMORED BRAIDED CABLE PER MAYEKAWA REQUISITION						
5) DEVICES ARE EX(ia) RATED						
6) JUNCTION BOX IS EX(e) RATED AND MATERIAL IS SS 316						
7) MULTI CORE/PAIR CABLE GLANDS BY OTHERS.						
8) DUE TO SPACE LIMITATION, ALL CABLE ENTRIES ARE FROM BOTTOM						
9) SEPARATION PLATE BETWEEN ANALOG, DIGITAL & POWER CABLES IS REQUIRED.						
KEY PLAN :						
01	30.09.24	ISSUED FOR APPROVAL	R.G	M.O	A.M.	
00	07.09.24	ISSUED FOR APPROVAL	R.G	M.O	A.M.	
REV.	ISSUE DATE	DESCRIPTION	PREPARED	CHECKED	APPROVED	COMPANY
CLIENT:						
CONSULTING ENGINEER						
PROJECT:						
DRAWING TITLE:						
Local Panel and Junction Box Wiring Diagrams						
JBD-A-RU0001A-03						
DRAWING NO.			REV.	SIZE	SCALE	SHEET
EI027-HSE-VD-IN-DIG-004			01	A3	N.T.S	15 of 18
14		15		16		







14	15	16	17	18
REFERENCE DRAWING		DWG NO.		REV.
A				
LEGENDS :				
B				
NOTES :				
1) INDIVIDUAL CONTROL WIRES SHALL BE IDENTIFIED BY TWO LABELS AT EACH END. THE FIRST LABEL (CLOSEST TO THE END OF THE WIRE) SHALL IDENTIFY THE NUMBER OF THE TERMINAL TO WHICH THE WIRE IS CONNECTED, THE OTHER LABEL SHALL IDENTIFY THE TERMINAL OF THE OPPOSITE END OF THE WIRE.				
2) AC SUPPLY PHASE BLACK NEUTRAL WHITE GROUND GREEN OR GREEN W/YELLOW TRACER				
DC SUPPLY POSITIVE RED OR RED SLEEVE OVER ANY COLOR EXCEPT GREEN				
NEGATIVE BLACK OR BLACK SLEEVE OVER ANY COLOR EXCEPT GREEN				
SIGNAL PAIR POSITIVE BLACK NEGATIVE WHITE				
SINGLE TRIAD POSITIVE BLACK NEGATIVE WHITE THIRD WIRE RED				
THERMOCPL POSITIVE PER ANSI MC96.1 NEGATIVE PER ANSI MC96.1				
3) IDENTIFICATION OF CABLES SHALL INCLUDE CABLE NUMBER AND DESTINATION.				
4) SKID WIRING SHALL BE ARMORED BRAIDED CABLE PER MAYEKAWA REQUISITION				
5) MULTI CORE/PAIR CABLE GLANDS BY OTHERS.				
6) DUE TO SPACE LIMITATION, ALL CABLE ENTRIES ARE FROM BOTTOM				
7) SEPARATION PLATE BETWEEN ANALOG, DIGITAL & POWER CABLES IS REQUIRED.				
F				
KEY PLAN :				
01	30.09.24	ISSUED FOR APPROVAL	R.G	M.O A.M.
00	07.09.24	ISSUED FOR APPROVAL	R.G	M.O A.M.
REV.	ISSUE DATE	DESCRIPTION	PREPARED	CHECKED APPROVED COMPANY
CLIENT:				
K				
CONSULTING ENGINEER				
L				
PROJECT:				
DRAWING TITLE:				
Local Panel and Junction Box Wiring Diagrams OIL HTR				
DRAWING NO.		REV.	SIZE	SHEET
EI027-HSE-VD-IN-DIG-004		01	A3	N.T.S 18 of 18
14	15	16	17	18